



DECCO





# OUR COMPANY

DECCO started operations in 1993 to assist in the development of railway and communication infrastructure in Mexico through the pressure treatment of wooden sleepers for railroads and wooden poles for electric power transmission lines and cable telephony.





# ABOUT US

FACILITIES TOTAL AREA: 185,000 m2.

OFFICES AND SERVICE AREA: 240 m2.

PRODUCTION AREAS: 2,780 m2.

YARDS OF STORAGE OF RAW MATERIALS AND FINISHED PRODUCTS: 181,980 m2

MEXICO OFFICES: 150 m2

## **MEXICO CITY HEAD QUARTERS:**

Av. Insurgentes No. 682-703B, Col. Del Valle, MÉXICO, CITY, 01090

Phone: (52) 55-56-81-00-40 e-mail: [info@comdecco.com](mailto:info@comdecco.com) [www.comdecco.com](http://www.comdecco.com)

**FACILITIES ADDRESS:** CARRETERA PARRAL-DURANGO KM. 17.5,

CASA BLANCA, DGO. 34000 MEXICO

Tax ID: CEI111202H45

**GENERAL DIRECTOR:** ING. ALEJANDRO AUTRIQUE ESCOBAR

[alejandro.autrique@comdecco.com](mailto:alejandro.autrique@comdecco.com)

**PLANT MANAGER:** ING. JAVIER OCHOA

[jochoa@comapo.com](mailto:jochoa@comapo.com)

**QUALITY CONTROL MANAGER:** ING. ALFREDO VILLEGAS

[alfredo.villegas@comdecco.com](mailto:alfredo.villegas@comdecco.com)

**PROCUREMENT MANAGER:** ING. JOSÉ LUIS ÁVILA

[joseluis.avila@comdecco.com](mailto:joseluis.avila@comdecco.com) Phone (52) 55-56-81-00-40

**EXPORT MANAGER:** JAIME ESCOBAR

[jaime.escobar@comdecco.com](mailto:jaime.escobar@comdecco.com) Phone: (52) 99-81-51-77-70





**After 28 years of experience we have become the leading supplier of pressure treated wooden sleepers in Latin America.**





**For over 10 years we have had significant presence in the southern United States market.**



## QUALITY SYSTEM



To ensure that the preserved sleepers and poles meet the quality requirements set out in the relevant standards, we have implemented a quality system based on ISO 9001-2008, which allows us to coordinate the departments involved to offer an excellent product and service.

This quality system and strict control at all stages of the process, is what has allowed us to export to all the continent.



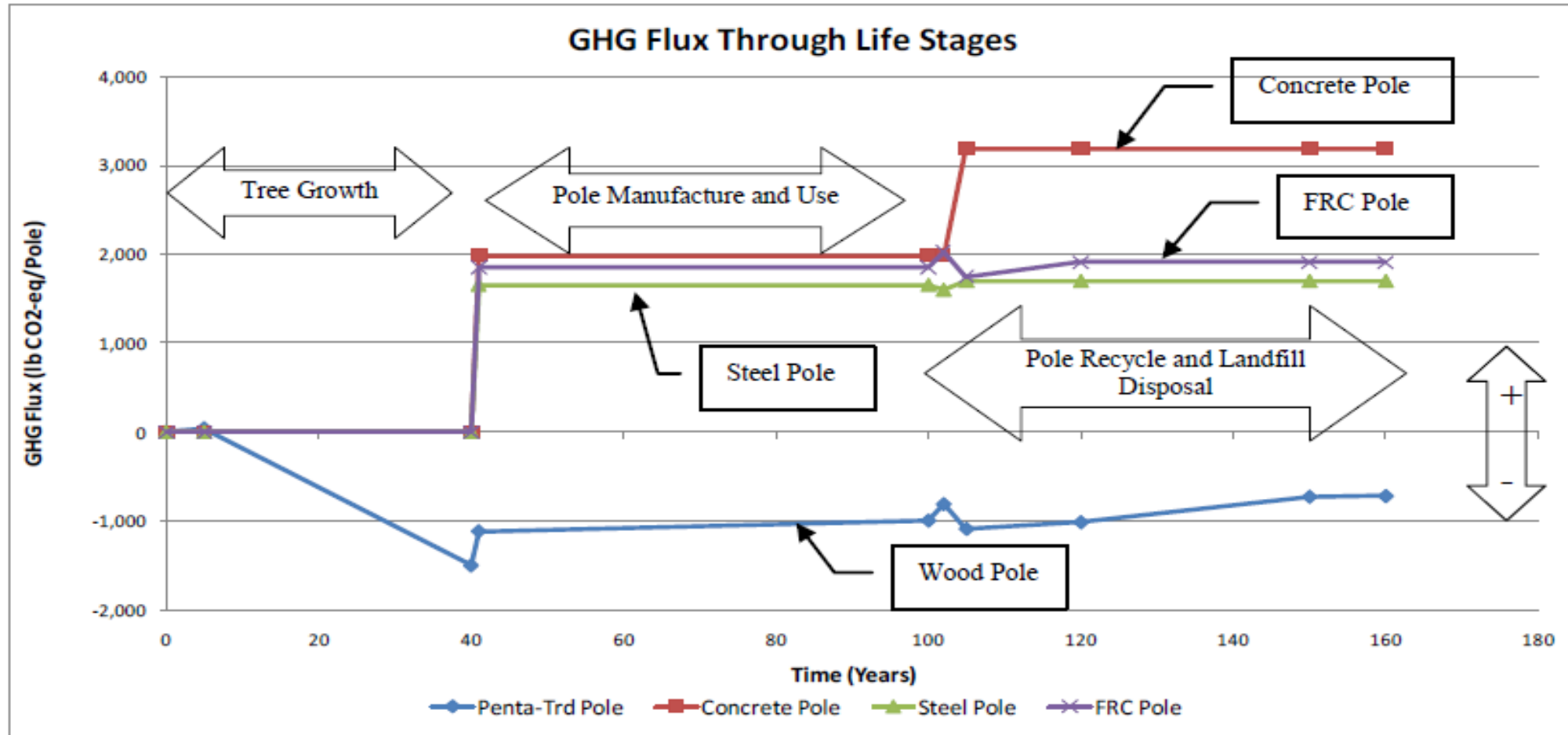
**The wood physical and mechanical properties make it the ideal material to manufacture sleepers because it has the necessary strength and toughness to withstand heavy loads, but also has the flexibility that allows it to absorb vibration and "work" without crumbling or breaking.**



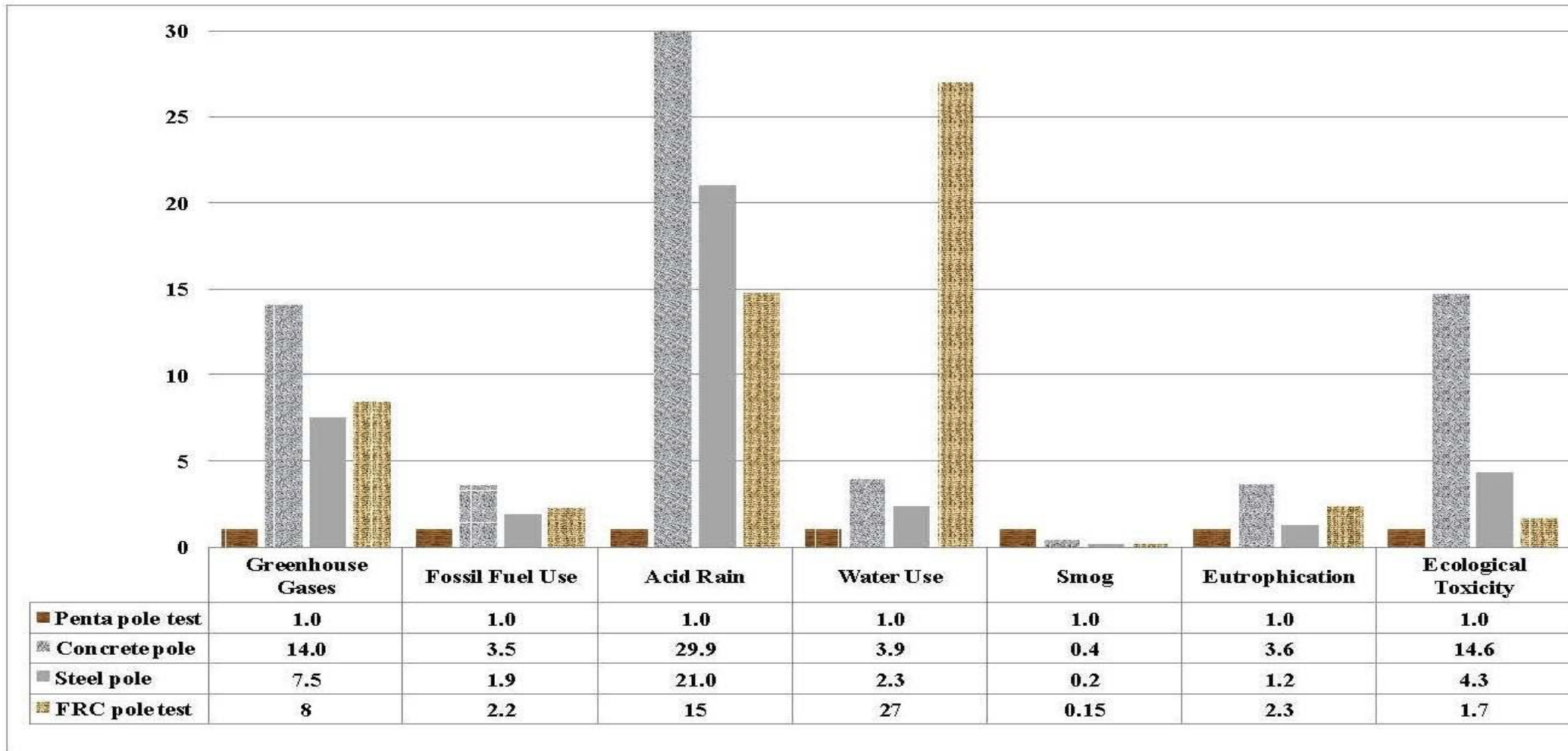


Wood is the “greener” and most environmentally friendly material for sleeper production because it is a renewable natural resource, the forest properly exploited regenerates alone, and a tree has to grow for many years to reach sufficient size to make a sleeper of it and during all those years the tree produced and sent oxygen into the atmosphere by capturing carbon dioxide instead of generating it as other products, as shown on the following graph.





This table shows in the blue line the negative balance (absorbed instead of emitting CO<sub>2</sub>) of wood during its life cycle. The energy used to transform a tree on a sleeper is much less than that required to manufacture a sleeper of concrete, plastic or steel. In addition, once ending life, wooden sleepers decomposes naturally rejoining the ecosystem, while concrete can not be recycled and recycle plastic and steel is extremely expensive.



This table shows how treated wood sleepers in the first bar on the left in coffee, is the material that emits less polluting and toxic gases comparing against metal and concrete sleepers.



# ENVIRONMENT



DECCO recognizes its environmental responsibility by complying with local applicable environmental legislation and regulations.

# WOOD SPECIES FOR SLEEPERS



## Hardwood

- American Red and White Oak
- Mexican Red and White Oak
- QUERCUS SIDEROXYLA
- QUERCUS RUGOSA
- Q. COCCOLOBAEFOLIA
- QUERCUS VIMINEA
- QUERCUS CRASIFOLIA
- QUERCUS ARIZONICA



# WOOD SPECIES FOR SLEEPERS



## **Softwood**

- Pinus Duranguensis  
(Sierra Madre Occ. del Norte)
- Pinus Cooperii  
(Sierra Madre Occidental del Nte.)
- Pinus teocote  
(Sierra Madre Occidental del Norte)
- Pinus Patula  
(Sierra Madre del Sur)
- Pinus Ocarpa  
(Sierra Madre del Sur)



# Two Step DUAL TREATMENT



After 22 years of studies and tests by the University of Mississippi, the USA and Canada railways have authorized the use of a dual treatment that **EXTENDS** the useful life of the sleeper by preserving with borates that have an excellent diffusion capable of penetrating 100% into the section of sleeper using water within the timber as a vehicle to be transported to the heart of the sleeper (step one). Subsequently the sleeper is seasoned covering the top layer of the batteries to avoid getting wet with rain water and finally pressure treated with creosote to encapsulate the borate and keep it inside the sleeper (step two).



## BENEFITS:

Protects against fungi & other organisms that creosote alone cannot kill

It is Non-toxic

Doubles the useful life of the sleepers due to biological aspects

Due to this development plastic and concrete sleeper use has decreased substantially in North America

It can be used in dry and wet climates

It is a product widely used in the timber and construction industry in North America

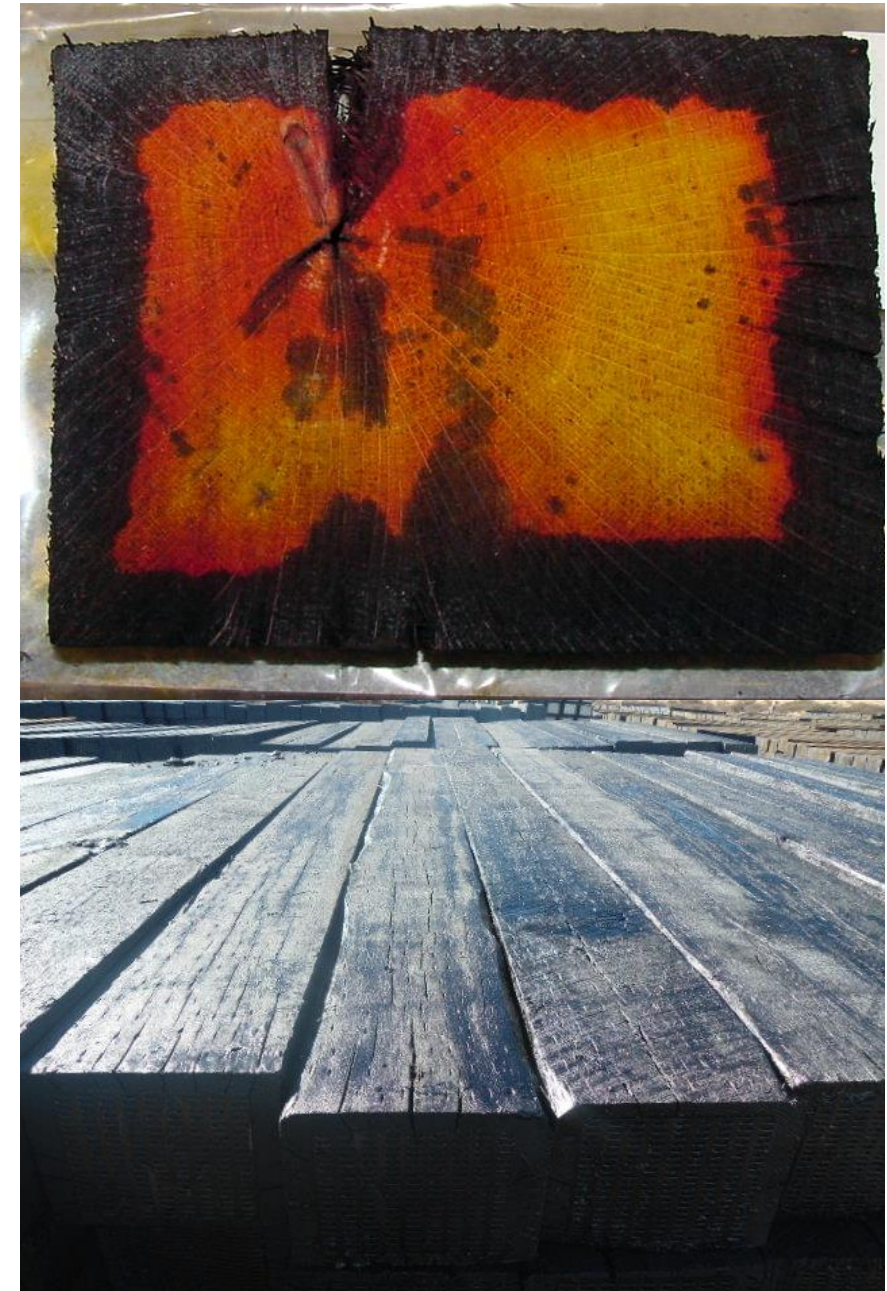
Prevents internal decay and corrosion on the nails

Reduces the use of creosote





All our ties are dual treated with borate + creosote, incised, and end plated according to AREMA & AWPAs standards.





# MAIN CUSTOMERS



## IN MEXICO

FERROMEX  
FERROSUR  
FERRO VALLE  
KCS MEXICO  
FIT  
HONDA  
MEXICO

## IN LATIN AMERICA

INCOFER (COSTA RICA)  
IBINES FERREO  
(COLOMBIA)  
DRACOL (COLOMBIA)  
SPCC (PERU)

## IN USA

UP  
RAIL WORKS  
FORMOSA  
WATCO  
NATURAL WOOD  
SOLUTIONS



- ◆ **COMERCIALIZADORA E IMPORTADORA DE MADERAS DECCO, S.A. DE C.V.**
- ◆ **Av. Insurgente No. 682-703B**
- ◆ **CP 03103 Mexico City, Mexico.**
- ◆ **Tel. 5219981517770**
- ◆ **Contact: Jaime Escobar**
- ◆ **Position: Commercial Director**
- ◆ **Email: [jaime.escobar@comdecco.com](mailto:jaime.escobar@comdecco.com)**
- ◆ **Web page: [www.comdecco.com](http://www.comdecco.com)**